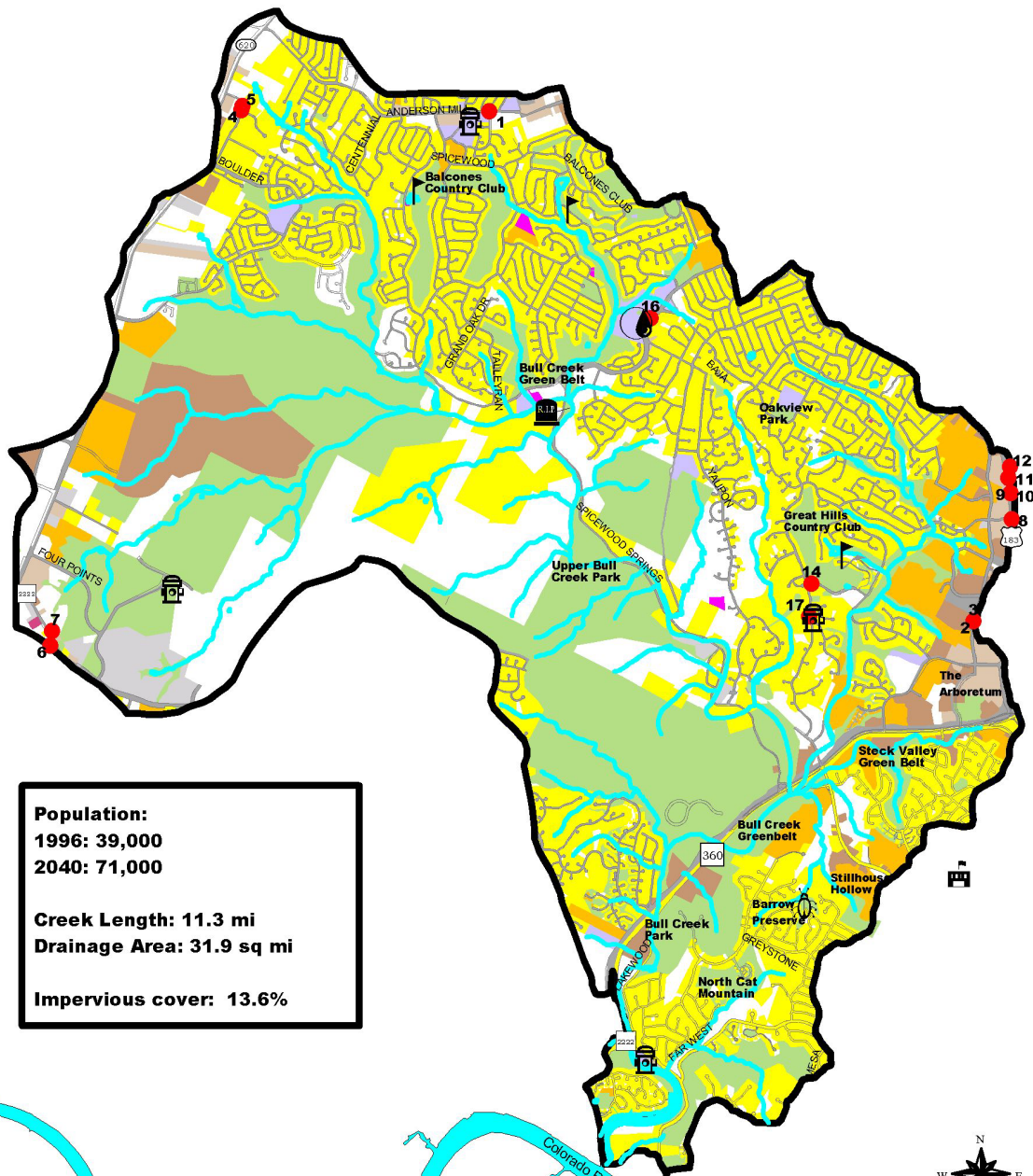


Bull Creek Watershed

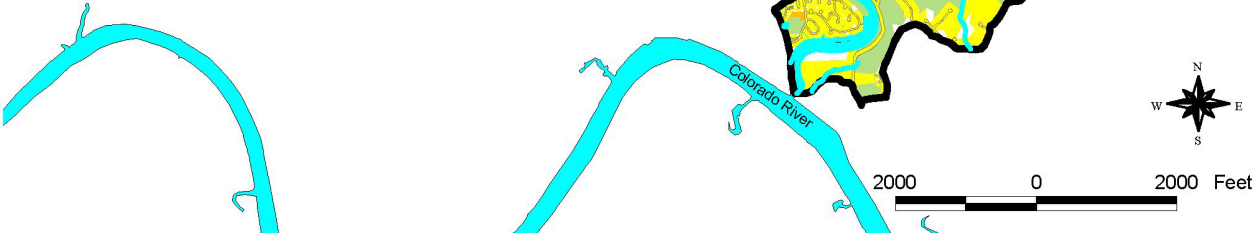
2000 Land Use



Population:
 1996: 39,000
 2040: 71,000

Creek Length: 11.3 mi
Drainage Area: 31.9 sq mi

Impervious cover: 13.6%



	Watershed Boundary		Office		Utilities
	Houses		Industry		Undeveloped
	Mobile Homes		Schools & Community Centers		Water
	Apartments		Parks		
	Stores		Transportation		

	Golf Course		Swimming Pool		Preserve
	Cemetery		Fire Station		Anderson HS